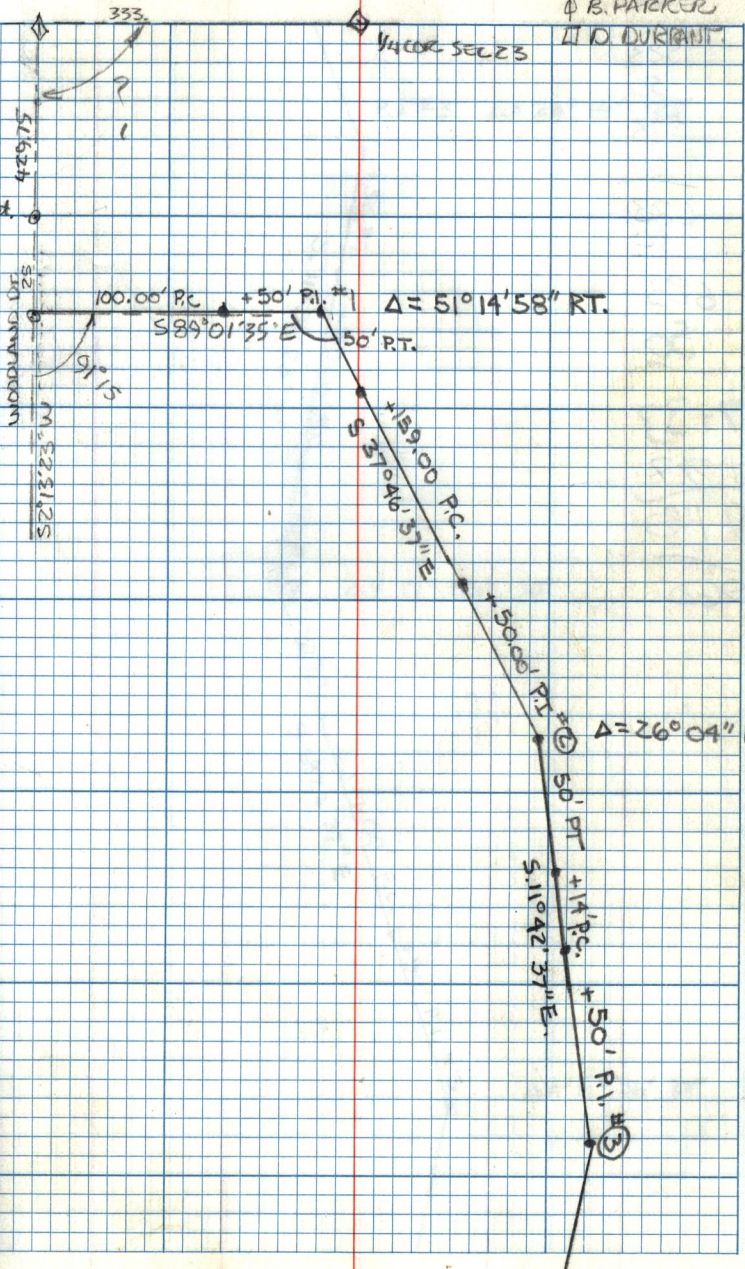


28 JUN 79  
 T. J. CARVER AB - 23  
 P. B. PARKER  
 M. D. DURANT



100.00' P.C. +50' P.I. #1  $\Delta = 51^\circ 14' 58''$  RT.

S 89° 01' 35" E 50' RT.

S 27° 46' 37" E 500' RT.

$\Delta = 26^\circ 04''$  RT.

S 11° 42' 37" E 50' P.I. #2  
 S 11° 42' 37" E 50' P.I. #3

WOODLAND DR  
 S 21° 23' W

1/4 COR. SEC 23

353.

429.75

25